

How was your visit today?

Think your views are important....so do we

You can let us know what you think about the practice, and any ways you feel we could improve, by filling in our annual patient survey form **during November**

All you need to do is....

Complete a questionnaire after you have seen the doctor or nurse, seal the form in the envelope supplied and post in the ballot box provided

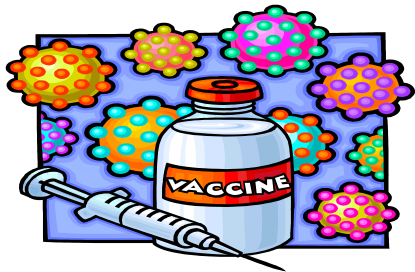
Thank you for your help



And finally....

Don't forget your Flu Injection!

Flu clinics are being held at the practice from October onwards
Keep an eye out for posters in the practice and on our website....



Autumn/Winter 2013

Welcome to

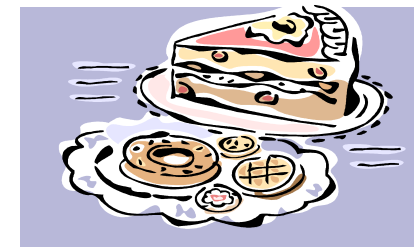


Visit our website at www.oakfieldshealthcentre.co.uk



A **BIG** thank you to **everyone** who supported the coffee morning held at Oakfields Health Centre on Friday the 27th September, in aid of Macmillan cancer support. Particular thanks go to our wonderful patient reference group who served the teas, coffees and cakes

We raised the **AMAZING** sum of **£280.20**



Weekend working

We are once again providing an opportunity for you to take advantage of weekend GP & Nursing appointments

Finding it difficult to come for your appointments due to work or family commitments?

Would you like to have an NHS Health check but cannot find the time?

If so please ask for a weekend appointment....

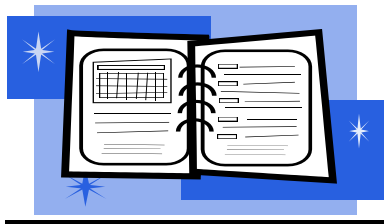
**Opening times are 8am – 6pm Saturday & Sunday
October 2013 – March 2014**

You will be able to book an appointment for checks such as:

- NHS Health checks (40 - 74 years)
- Flu vaccinations
- Shingle vaccinations (70 & 79 years only)
- Diabetes reviews
- Heart Disease reviews
- Asthma or COPD reviews
- Blood Pressure reviews
- New Patient checks

To make an appointment please contact us during the week

There will be **no** home visits or telephone appointments



Sharing of electronic patient records

With effect from the 2nd October, when you are referred by a clinician at this practice to a community team we will automatically share your electronic patient record, unless you choose **not** to do so. When you attend an appointment with the community team you will also be asked by them if you still wish to share your patient record, as you may have re-considered this choice. Your decision will be respected

Examples of Community teams are:

- Rehabilitation Service
- Intermediate Care Team
- District Nursing Teams
- Diabetes Service
- Dermatology Teams
- Health Visiting and School Nursing Teams
- Speech & Language Team
- Pulmonary Rehabilitation Team

If you are referred to a community team and **do not** wish for your electronic patient record to be shared please **inform** the clinician at the time of referral or contact reception and let us know.

Electronic patient records are always managed in a strictly confidential manner and will only be available to the relevant community teams for the length of your care with them. This will enable the community teams to provide you with more timely, effective and informed care

Should you have any queries please contact, Catherine McBride
Business Manager

